

TS 79

Door closer



The inexpensive compact quality solution for standard doors assured

With the TS 79, dormakaba has developed a door closer that rounds off its ClassicLine series perfectly. The ease and speed with which it can be fixed, the fact that its spring strength can be so easily adapted to the door size – by simply turning round the closer arms power shoe and changes in template position allows an easy selection of the closing force to suit various door sizes. Its competitive price should make it the ideal choice for your application.

Certified to ISO 9001

Benefits

For the trade

- Increased stocking flexibility thanks to the standard ClassicLine series arm.
- Complements the ClassicLine series as a competitive model for standard doors.

For the installer/fabricator

- Non-handed design.
- Easy and quick to fix.

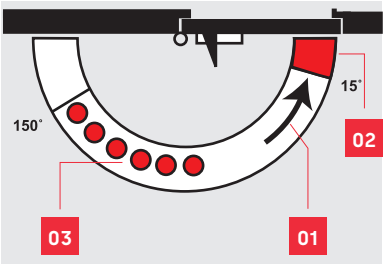
For the architect/specifier

- Competitive and reliable.
- Compact construction combined with classic design.

For the user

- Constant closing action virtually unaffected by temperature fluctuations.
- Optimum closing speed adjustment with two regulating valves
- Reliable closing with adjustable latching action.

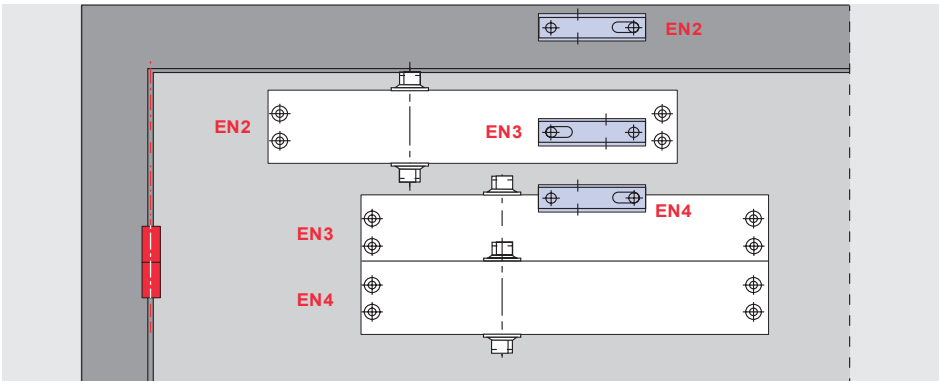
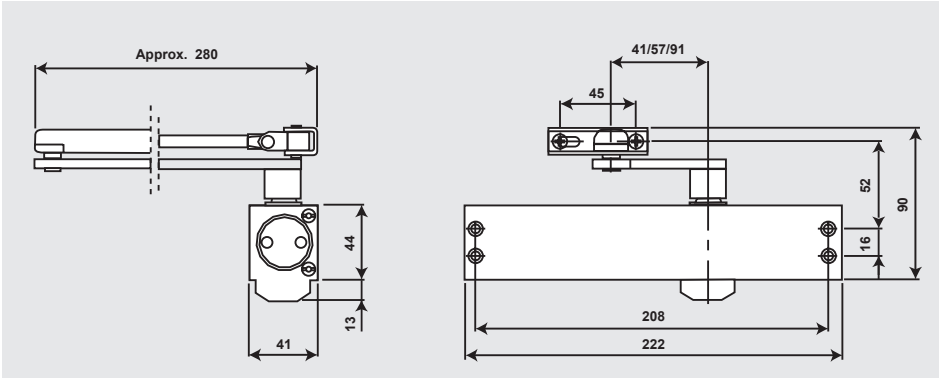
Data and features		TS 79
Spring strength (adjustable by size by power shoe and templating position)	Size	EN 2/3/4
Standard doors	≤ 1100 mm	•
External doors, outward opening		•
Fire doors		•
Non-handed		•
Arm type standard scissor arm		•
Parallel arm bracket included		•
Closing speed adjustable at 2 separate valves	180° – 15° 15° – 0°	•
Backcheck		•
Delayed action		–
Hold-open		○
Weight in kg		1.7
Dimensions in mm	Length Overall Depth Height	222 41 44
Approved to AS1905 Part 1 Fire Resistant Doors (Backcheck model only)		•
yes – no option		



- 01 Closing speed adjustable in the range 180° – 15°.
- 02 Closing speed adjustable in the range 15° – 0°.
- 03 Hold-open range for model with hold-open arm model (optional extra).

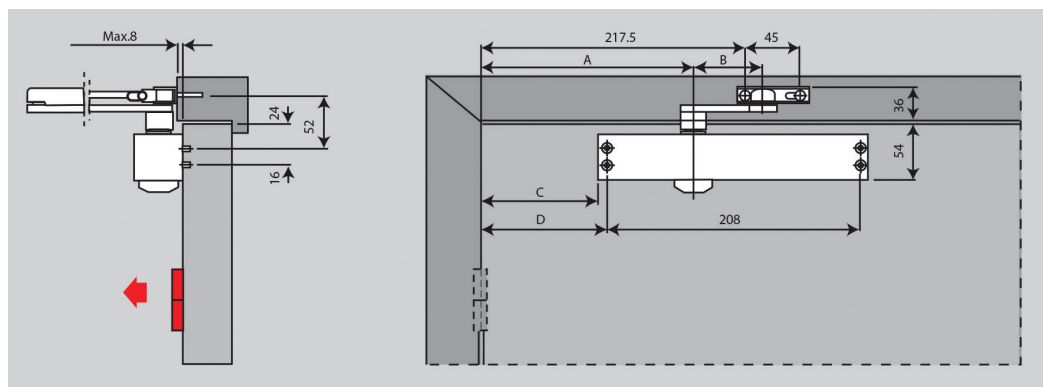
Door width	Size setting
≤ 850 mm	EN 2
≤ 950 mm	EN 3
≤ 1100 mm	EN 4

The TS 79's size setting is selected for the door width by moving the closer body and/or turning the arm power shoe.



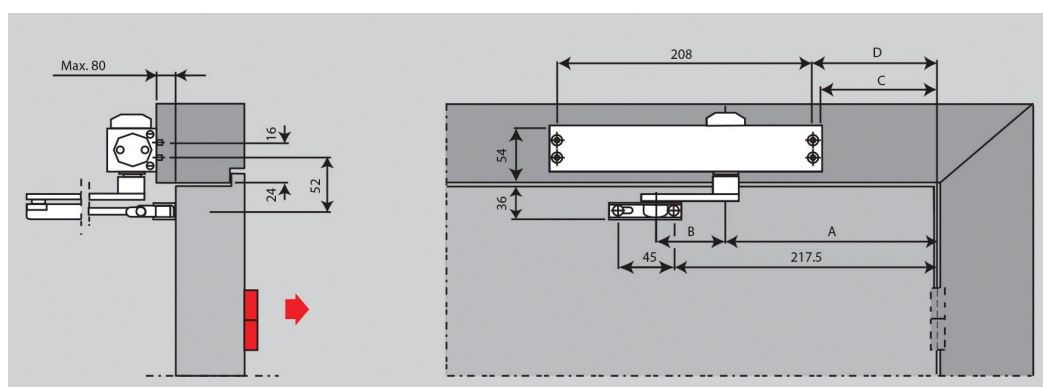
Door leaf fixing, pull-side

	EN 2	EN 3	EN 4
A	141	191	191
B	91	57	41
C	62	112	112
D	70	120	120



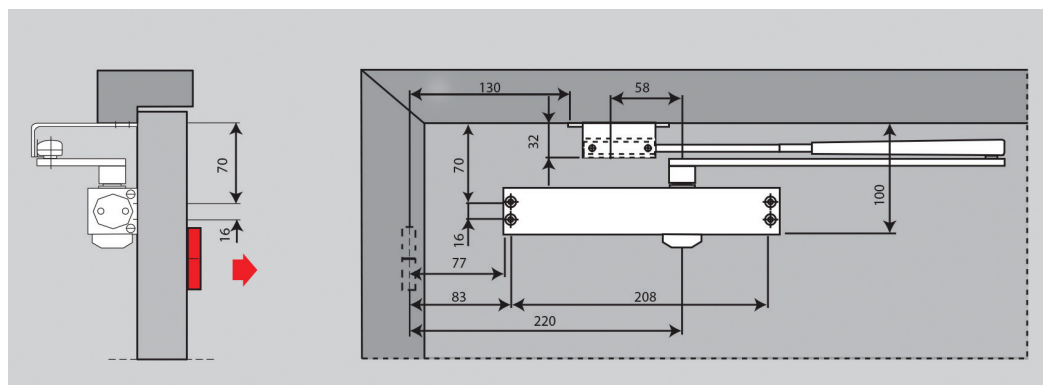
Transom fix (overhead frame installation), push side

	EN 2	EN 3	EN 4
A	141	191	191
B	91	57	41
C	62	112	112
D	70	120	120



Parallel arm fixing, push side

With this fixing method, the closing force is approx. 20NM (for doors up to 950mm).



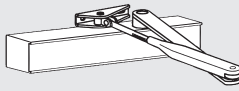
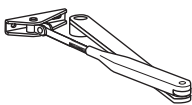
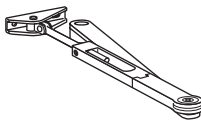

Standard equipment

Order No.

- ☐ = Closer body and arm
- ☐ = Arm assembly separate
- ☐ = Accessory

Colour

- Silver **01**
- Special colour **09**
- Black P190 **19**

Closer body with arm	Standard arm	Hold-open arm	Parallel arm bracket
			
Size EN 2 / 3 / 4			
223157xx Std arm	<input type="checkbox"/> 220023xx	<input type="checkbox"/> 220025xx	<input type="checkbox"/> 280066xx
9400000004997 H/O Silver	<input type="checkbox"/>	<input type="checkbox"/>	



**Door
Hardware**



**Entrance
Systems**



**Electronic
Access & Data**



**Interior Glass
Systems**



**Lodging
Systems**



**Mechanical
Key Systems**



Safe Locks



Services

Our Sustainability Commitment

We are committed to fostering a sustainable development along our entire value chain in line with our economic, environmental and social responsibilities toward current and future generations.

We seek an open, transparent dialogue with all stakeholders to define strategies and actions based on clear targets and continuous improvement, and we actively report on our progress.

DHW_TS 79 Door Closer Brochure_JULY 2023 DHW00031.
Subject to change without notice

dormakaba Australia

Head Office
12-13 Dansu Court
Hallam VIC 3803
T 1800 675 411
info.au@dormakaba.com
www.dormakaba.com.au

dormakaba New Zealand

Building P 61-69 Patiki Road
1026 Avondale/Auckland
New Zealand
T: 0800 436 762
info.nz@dormakaba.com
www.dormakaba.com.au